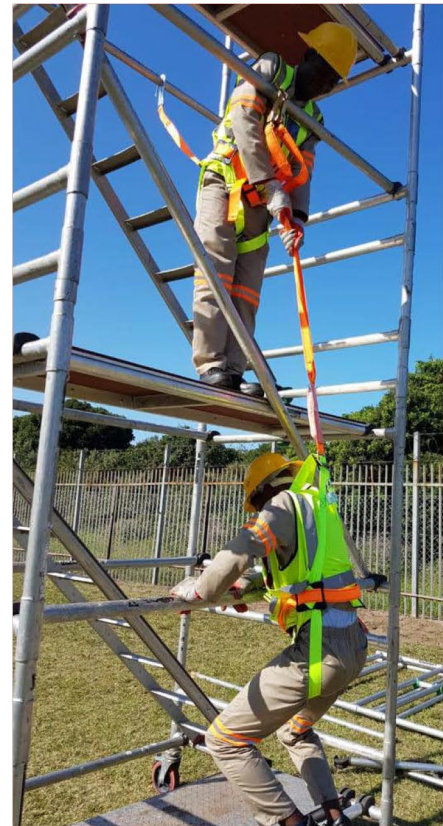


# SCAFFOLDING COURSE

Employees responsible for erecting scaffolds must know what a safe scaffold is in order to build it to the correct specifications. Removing a single piece can change the design and load-bearing capacity.

Medical certificates of fitness, legal notices and SANS 10085 are all required if you want to pass a Department of Labour Inspection.

FTS Safety's Scaffolding course allows you to understand relevant legislation and order the correct scaffold equipment in order to meet the specifications of SANS 10085 and SABS



Duration: 1 Day

Legislation: Sections 17 and 18 of the Occupational Health and Safety Act & SANS 10085

## SUBJECT AREAS

- Basic Scaffolding Operations
- Kwik Stage
- H-Frame
- Staircase
- Basic Scaffolding Equipment
- Erect/Inspect Pre-Fab Scaffolding Equipment
- Alter and Repair Pre-Fab Scaffolding Equipment
- Dismantle Pre-Fab Scaffolding Equipment
- Inspect/Erect Cantilevered Hoist
- Alter, Repair and Dismantle Cantilevered Hoists
- Scaffold accidents
- General scaffold components
- Platforms
- Platform loading & overhangs
- Planks
- Fabricated Wooden or Metal Decks
- Mud Sills
- Screw Jacks
- Side Brackets
- Truss Bearers
- Ties
- Welded frame scaffolds
- Mobile Scaffolds
- Swing stage Scaffolds
- Guard Rails
- Fall Protection and Access

## WHAT YOU GET

Course Participants will be provided with stationery, manuals and workbooks and refreshments. Upon success certificates will be issued.



## BENEFITS



Certification & Accreditation on completion



Graphic and Interactive course design



Guaranteed value or you don't pay



Qualifies for training insurance

